

BPC West Sewershed Package 5B Project

Rachel Hoffmeyer, P.E.

Project Engineer, Public Works and SSO Reduction

Roxanne L. Lockhart

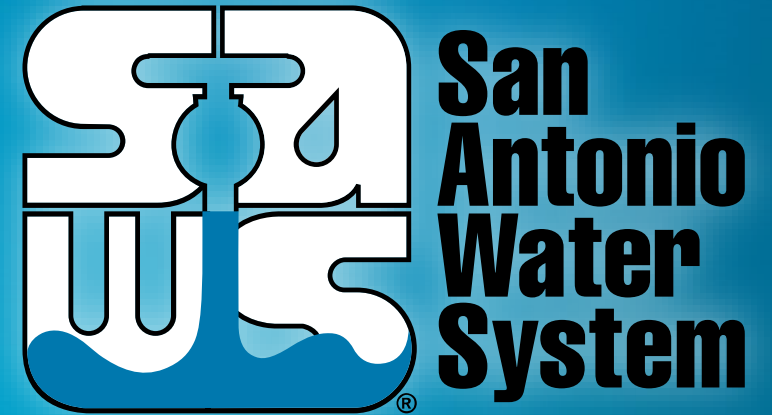
Contract Administrator

Marisol V. Robles

SMWVB Program Manager

Julian Bielawski, P.E.

Engineer of Record, Weston Solutions, Inc.



Non-Mandatory WebEx Pre-Bid Meeting
Wednesday, December 1, 2021

MAKING SAN ANTONIO
WATERFUL



Oral Statements

Oral statements or discussion during the pre-bid meeting today will not be binding, nor will it change or affect the terms or conditions within the Plans and Specifications of this Project. Changes, if any, will be addressed in writing only via an Addendum.

Agenda

- General Information
- Small, Minority, and Woman-owned Business (SMWB) Requirements
- IFB Schedule
- Contract Solicitation Website
- Vendor Registration & Notification (VRN)
- Contract Requirements
- Bid Packet Preparation
- Key Reminders
- Temporary Bid Opening Instructions
- Contact Information
- Technical Information

General Information

- Non-mandatory pre-bid meeting
- Presentation has been posted on SAWS website
- Construction services being procured through low bid under Chapter 2269 of the Texas Government Code
- Construction Estimate: \$2,120,980.00
- Calendar Days: 360 days

Aspirational SMWB Goal

Industry	Aspirational SMWB Goal
Construction	20%

The aspirational SMWB goal is 20% of your total bid price.

Minimum Qualifications for SMWB recognition:

- **Certification required from the South Central Texas Regional Certification Agency.**

www.sctrca.sctrca.org

- All SMWBs must be “small,” and have SBE certification at minimum.
- MBE, WBE, SBE (Includes “HUB” Program.)

- **Must have a local office or local equipment yard.**

Good Faith Effort Plan (GFEP) FAQs

- **Q: Is the 20% SMWB goal mandatory?**

A: No, but we ask prime contractors to do their best with good faith outreach efforts. If the goal is not met, proof of outreach efforts is required with the submittal.

- **Q: What if my business is SMWB-certified? Do I need to find SMWB subs?**

A: If your firm is SMWB-certified, you will most likely meet the goal. However, the GFEP is a required document, and a good faith outreach effort is still necessary.

- **Q: Do I need to include all my subcontractors in the GFEP or just those that qualify towards the SMWB goal?**

A: All subcontractors need to be included in the GFEP, even those that may not count towards the aspirational goal.

- **Q: What if I have questions about the GFEP?**

A: Please contact the SMWB Program Manager at 210-233-3420, or at Marisol.Robles@saws.org. GFEP questions can be asked at any time before the submittal is due.

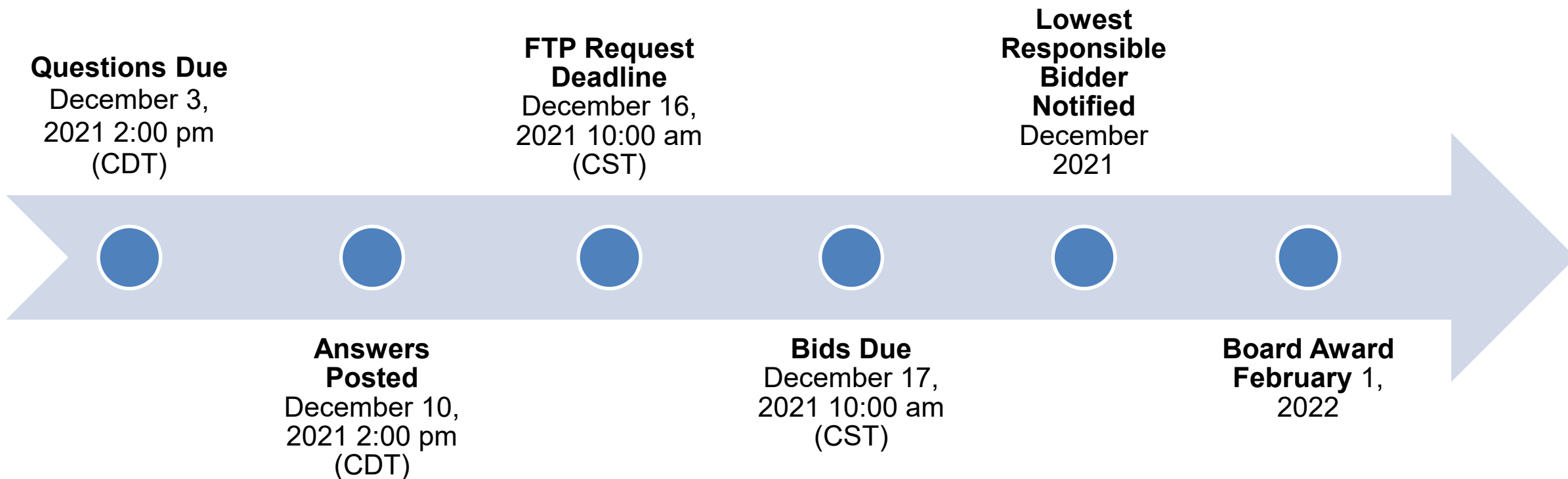
Post Award: Subcontractor Payment & Utilization Reporting (S.P.U.R.) System

1. Subcontractor & Supplier Payment Tracking
2. Subcontractor and Supplier Additions or Substitutions
3. Must be Current and Accurate before Retainage is released

<https://saws.smwbe.com>

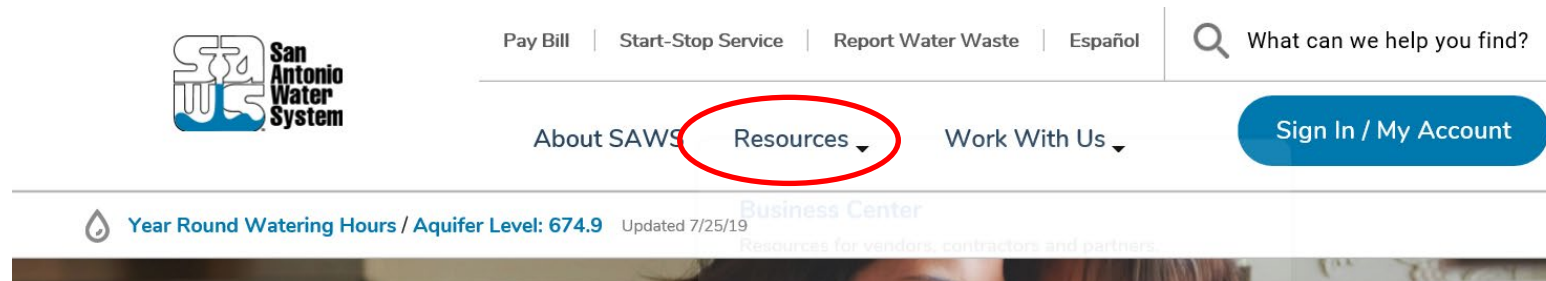
The screenshot shows the homepage of the San Antonio Water System's Subcontractor Payment & Utilization Reporting System. The page features a dark blue header with the San Antonio Water System logo on the left, a link to the main site, and a 'CONTACT SUPPORT' button. The main content area has a background image of industrial water treatment equipment. The title 'Subcontractor Payment & Utilization Reporting System' is prominently displayed in white text, with a 'Log In' button below it. Below the title, there are three columns of links: 'System Training' (with a sub-link 'Training'), 'About the System' (with a sub-link 'Information for Vendors'), and 'Account Access' (with sub-links 'Account Lookup' and 'Forgot Password'). At the bottom, a footer states: 'The Subcontractor Payment & Utilization Reporting System is powered by B2Gnow Software © Copyright 2018.'

IFB Schedule

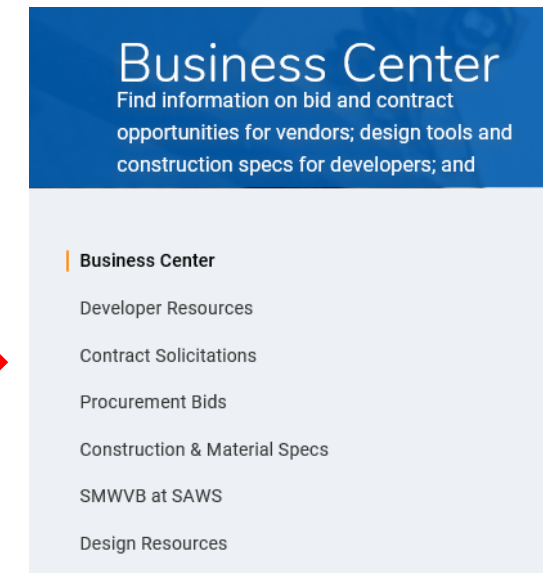


Contract Solicitations Website

- To locate the Contract Solicitations website choose Resources



- At the drop down menu choose Contract Solicitations.



Vendor Registration & Notification (VRN)

Reasons to Register in the VRN

- Receive bid notices directly in your email “Inbox”.
- Download bid documents.
- Subscribe to specific bids.
- Receive addendum notifications.



Notify Me

Receive updates sent straight to your inbox.



Subscribe

https://apps.saws.org/Business_Center/Contractsol/

Contract Requirements

Prevailing Wage Rate and Labor Standards – Section 2.10 of the General Conditions

- Payroll records are subject to review
- Contractors to utilize LCP Tracker
- Certified payroll to be submitted on weekly basis for duration of the project
- Contractors are responsible for sub-contractor payroll
- Late payrolls may delay contractor payments and release of retainage from SAWWS
- Wage decisions are included within the specifications
- Site visits are random and unannounced
- Interviews will be conducted and will be private & confidential
- All apprenticeship programs will need to be approved by Department of Labor prior to starting

Contract Requirements

Supplemental Conditions

- Insurance requirements are found in Section 5.7 of the GCs
 - Installation Floater coverage required in lieu of Builder's Risk
- Contractor must maintain insurance coverage for the duration of the construction Project
- Contractor's insurance must be compliant for all SAWS projects; otherwise, it may affect recommendation for award
- SAWS will ask for insurance prior to Board award to expedite execution of the contract
 - Must be compliant prior to execution of the contract and issuing the NTP

Contract Requirements

Supplemental Conditions

Apparent Low Bidder

- Notified within 24 hours of Bid Opening
 - To provide the following within one (1) business day
 - Conflict of Interest Questionnaire - Form CIQ (Rev. 1/1/2021)
 - Proof of Insurability
 - Company Information Packet
 - Statement regarding ability to complete the project
 - W-9
 - Statement of Bidder's Experience Forms
 - Detailed Baseline Schedule
- *And, if bid was submitted electronically without a Bid Bond:
- Cashier's Check or Certified Check

Contract Requirements

Supplemental Conditions

- Statement of Bidder's Experience Form(s)
 - Total of 4 forms (A-1 to A-4)
 - A-1 and A-2 performed by Bidder only
 - A-3 and A-4 can be performed by Bidder or Subcontractor
 - References must have valid contact information (previously verified)
 - Owner reference is defined as City, County, State, etc.
 - Thoroughly review check boxes on each form to ensure project complies with requested bidder experience

Contract Requirements

Supplemental Conditions (Continued)

- Contractor shall perform the work with its own organization on at least 40% of the total original contract price which should be indicated on the Good Faith Effort Plan.

Prime Contractor's Percentage of Participation: (Ex: 100% is the total value of the contract.) _____ %

- Liquidated damages will be assessed at \$1,578.50 per day

Bid Packet Preparation

- Utilize the Bid Packet Checklist within the specifications
- Double check all mathematical calculations and verify all extensions
- Ensure Mobilization and Preparing Right-Of-Way do not exceed percentage (line items 1-96 only)
- Addendums are acknowledged on the Bid Proposals
 - Check our website regularly for addendum postings
 - It is possible to have multiple addendums during the time frame in addition to the scheduled final addendum

Key Reminders

- All questions should be sent in writing to the corresponding Contract Administrator by email or fax.
- Please identify the project by its associated solicitation number and name. (CO-00477 BPC West Sewershed Package 5B)

Temporary Bid Opening Procedures

- Bids will be submitted using SAWWS' temporary bid opening procedures
- SAWWS encourages and prefers the submission of electronic bids using its secure FTP site.
 - Bidders should submit a request via email to obtain access to the site no later than 24 hours before the bid opening.
- Or, Bidders may drop off bid; but only the required items and only to this location
 - Drop box located at 2800 US Hwy 281 N, Customer Service Tower
 - Enter the first set of glass double doors
 - Insert into the black drop box on the wall on the left hand side
- Late bids will not be accepted and will be returned unopened.
- Bid Opening held via WebEx only; link found in Invitation to Bidders

Contact Information

<u>Contact Name</u>	<u>Title</u>	<u>Telephone Number</u>	<u>Email address</u>
Roxanne Lockhart	Contract Administrator	210-233-3095	Roxanne.Lockhart@saws.org
Marisol V. Robles	SMWVB Program Manager	210-233-3420	Marisol.Robles@saws.org

REMINDER

Please be advised that Bidders are prohibited from communicating with any other SAWS staff, the Consultant, the Developer, or City of San Antonio officials regarding this IFB up until the contract is awarded as outlined in the Instructions to Bidders

Project Overview

Project locations - 13 sites

Pipe Bursting:

8" – 2,729 LF

27" – 579 LF

CIPP:

8" – 365 LF

10" – 286 LF

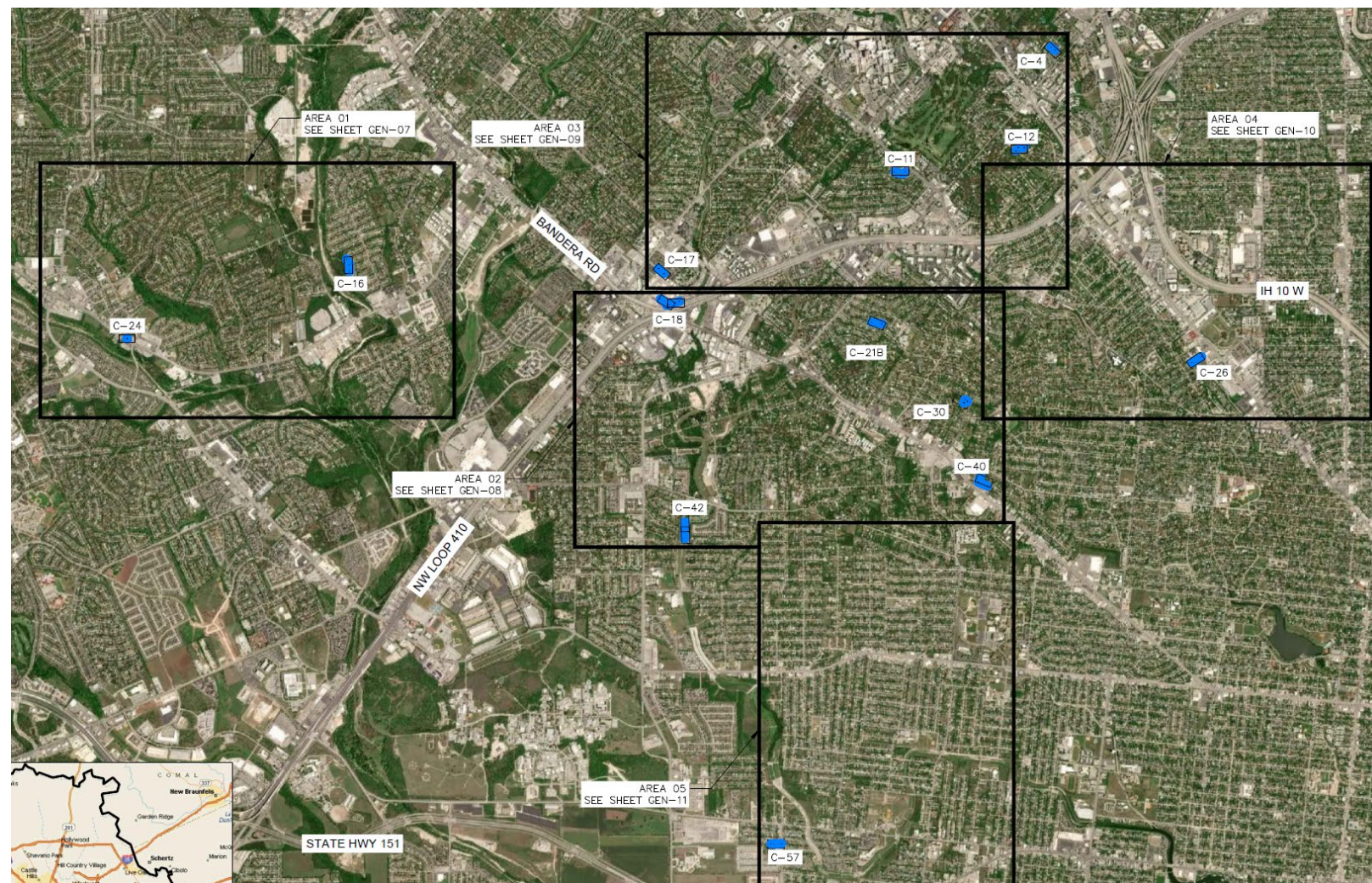
Open-Cut:

8" – 900 LF

10" – 13 LF

Boring:

18" – 386 LF



Project Overview

Statement of Bidder's Experience

Project experience shall be of four projects completed between 2016 and 2021:

1. Demonstrate construction of a minimum of 1,000 LF of 8 inch or larger sanitary sewer pipe by Pipe Burst construction method. (Completed by Bidder)
2. Demonstrate construction of a minimum of 1000 LF of 8 inch or larger sanitary sewer pipe by Open-Cut construction method. (Completed by Bidder)
3. Demonstrate construction of a minimum of 500 LF of 8 inch or larger sanitary sewer pipe by Boring. (Completed by Bidder or Subcontractor)
4. Demonstrate experience in installation of bypass pumping systems for large diameter sanitary sewers (24" or larger). (Completed by Bidder or Subcontractor)

Project Overview

Special Conditions

➤ Project Data:

Construction Period: 360 days.

➤ CPS Allowance:

Contractor to begin coordination immediately after Notice to Proceed is provided by SAWS to avoid construction delay. Payment for utility pole bracing will be made up to the allowance included in the bid, and utility poles potentially needing bracing have been identified on the plans.

➤ Floodplain Protection:

SAWS will provide floodplain permit to the contractor. Contractor is advised to proceed with caution when working near these areas during rain events.

➤ CoSA Coordination:

Contractor shall obtain ROW permit and conform to CoSA permit requirements while performing construction activities.

Project Overview

Special Conditions

➤ TXDOT:

Contractor shall coordinate with SAWS in acquiring TXDOT permit and comply with TXDOT requirements during construction. (site: C18)

➤ Construction Right-Of-Entry:

All sites require Construction Right-Of-Entry (ROE) for access and/or additional work area. Contractor shall coordinate with SAWS on Construction ROEs and schedule project activities and site preferences accordingly. ROE requirements are identified in the ROE Agreements.

Project Overview

Supplemental Conditions

➤ CIPP/PB Restoration:

All site restoration associated with pipe installation shall be considered incidental to the cost of CIPP/PB unless specified otherwise.

➤ Rehabilitation of manholes:

Standard manhole rehabilitation shall be paid for the vertical feet. Larger diameter manhole rehabilitation shall be paid for the square feet.

➤ Schedule:

Contractor shall prioritize project sites for construction based on SAWS preference to accommodate ROE schedule requirements.

Project Overview

Special Provisions to Technical Specifications

➤ 849 Sanitary Sewer Acceptance Testing

No direct payment shall be made for Air/Infiltration/Exfiltration, and Deflection Testing and all costs in connection therewith shall be included in the applicable contract price for the item to which work the pertains.

➤ 1103 Point Repairs and Obstruction Removals (for Remote PR)

If approved by SAWS and the Engineer, sectional CIPP-PR may be employed at specific point repair locations.

➤ 530 Barricades, signs & Traffic Handling

Unless itemized in the Bid Proposal Form, work performed shall be considered subsidiary to the pipe rehabilitation work.

➤ 540 Erosion & Sedimentation Control:

Work performed and materials furnished shall be considered subsidiary to pipe rehabilitation work.

Project Overview

Special Specifications

➤ 01380 Pre Construction Inspection and Video Documentation

To be used before and after Boring activities – Site C-26

➤ 02400 Trenchless Crossing by Guided Boring or Microtunneling, 02410 Trenchless Crossing Jacking & Receiving Pits, & 02420 Tunnel Grout

To be used for Boring activities – Site C-26

➤ 3300 Sanitary Sewer Private Lateral

To be used for private lateral reroutes – Site C-40 OC

➤ 6001 Portable Changeable Message Sign

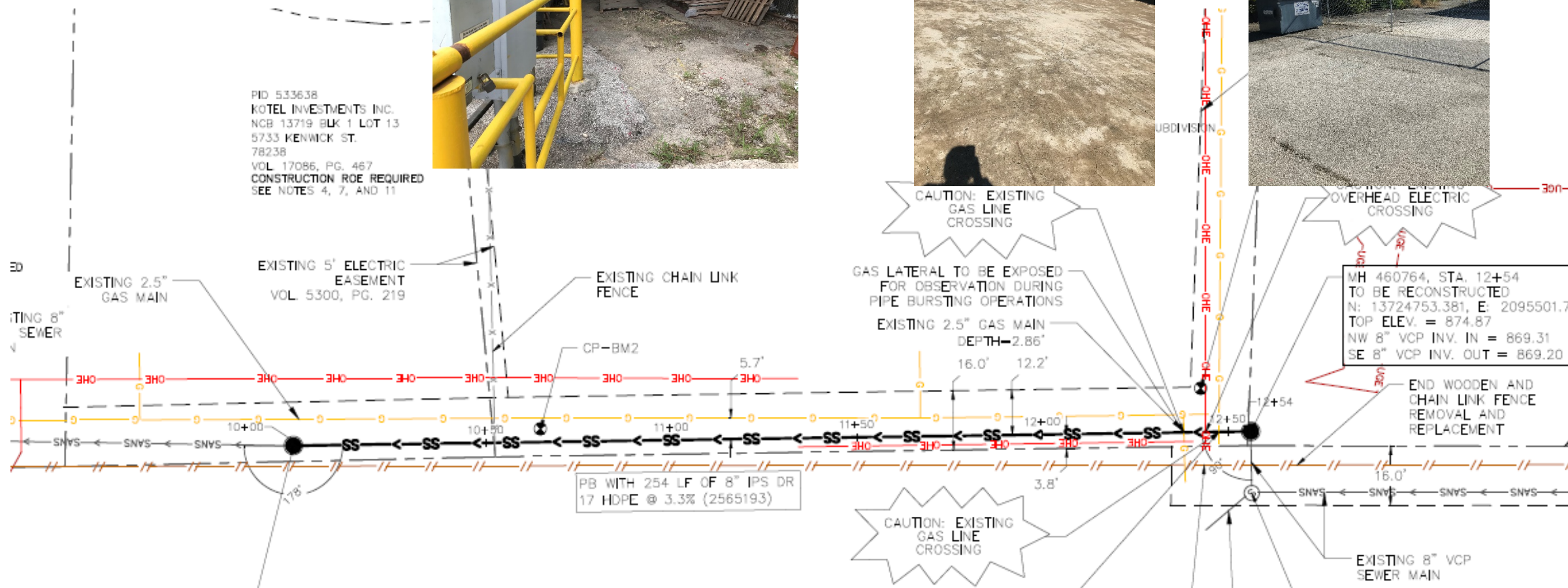
To be used for traffic control – Sites C-18 & C-24

Project Details:

Site CI7: PB

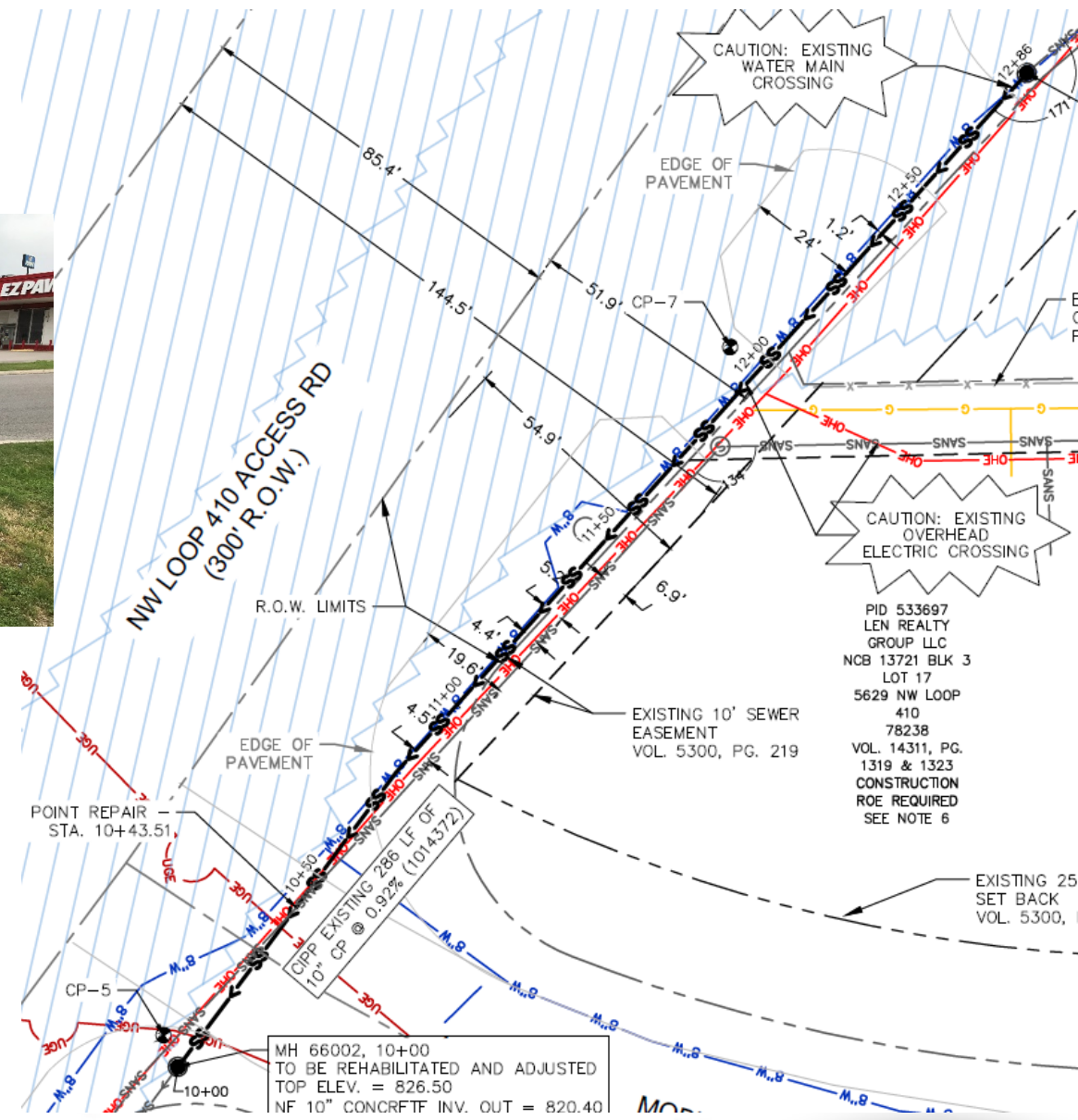


PID 533638
 KOTEL INVESTMENTS INC.
 NCB 13719 BLK 1 LOT 13
 5733 KENWICK ST.
 78238
 VOL. 17086, PG. 467
 CONSTRUCTION ROE REQUIRED
 SEE NOTES 4, 7, AND 11



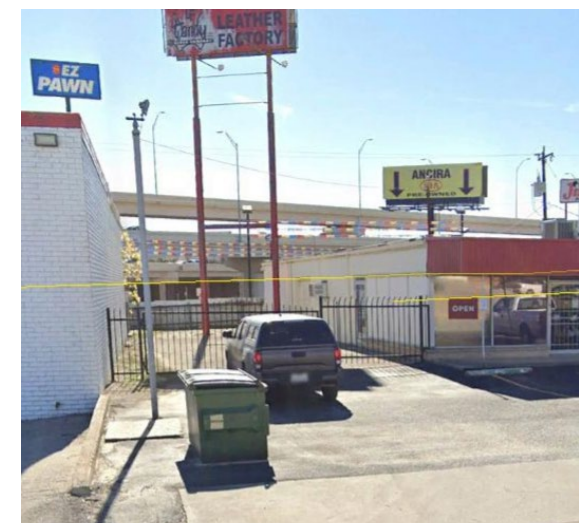
Project Details:

Site CI8: 10" CIPP

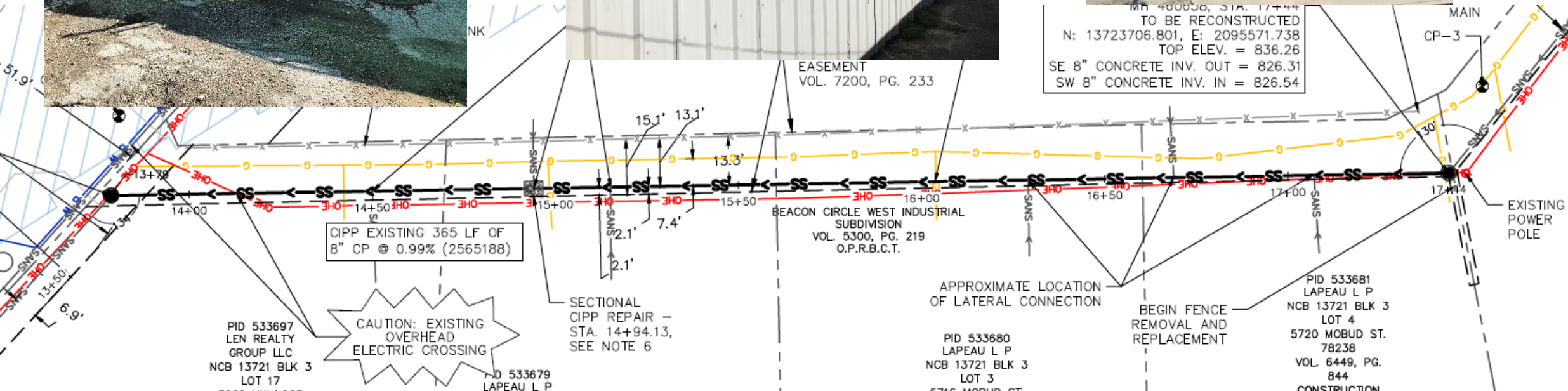


Project Details:

Site CI8: 8" CIPP

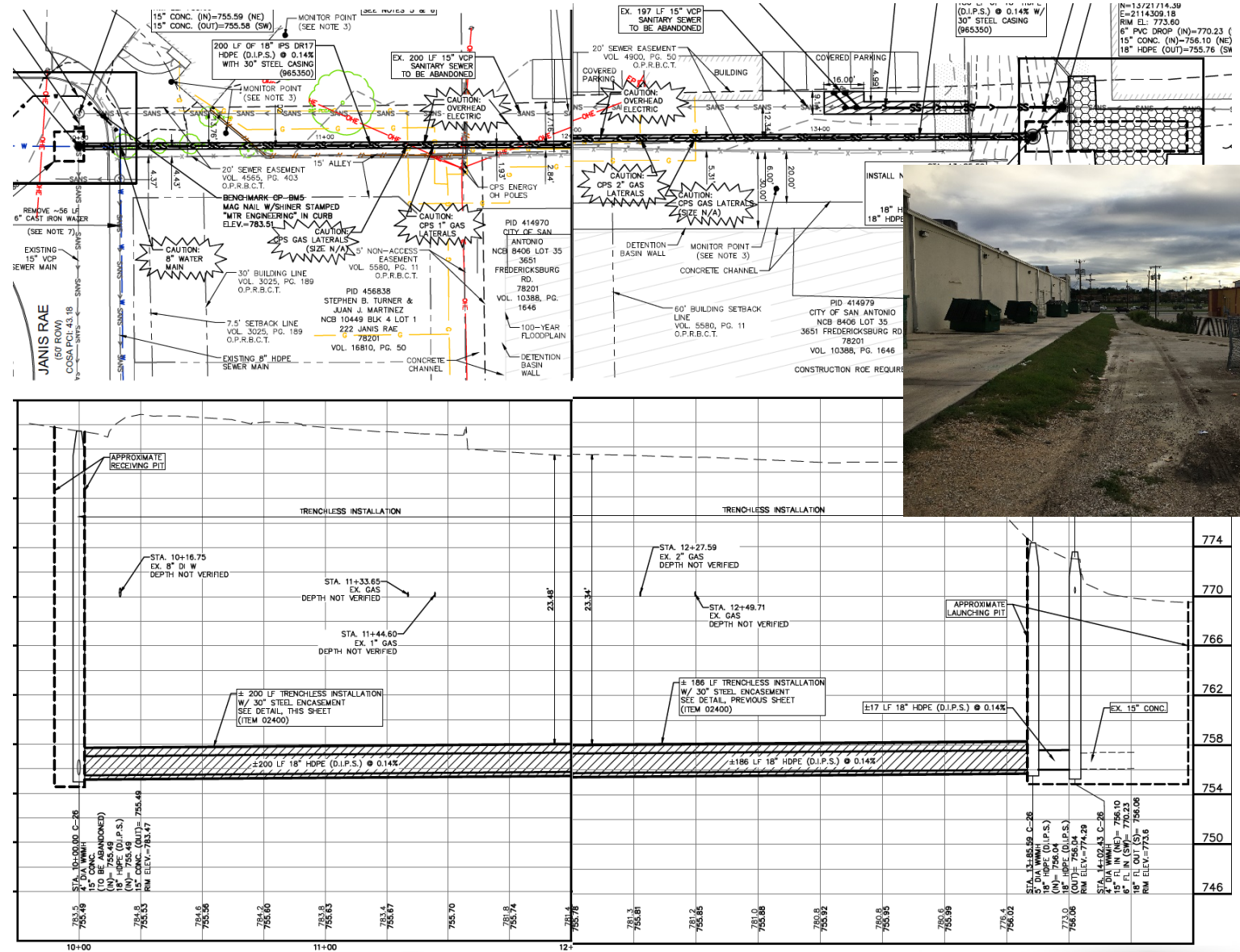


MH 400036, STA. 17+44
 TO BE RECONSTRUCTED
 N: 13723706.801, E: 2095571.738
 TOP ELEV. = 836.26
 SE 8" CONCRETE INV. OUT = 826.31
 SW 8" CONCRETE INV. IN = 826.54



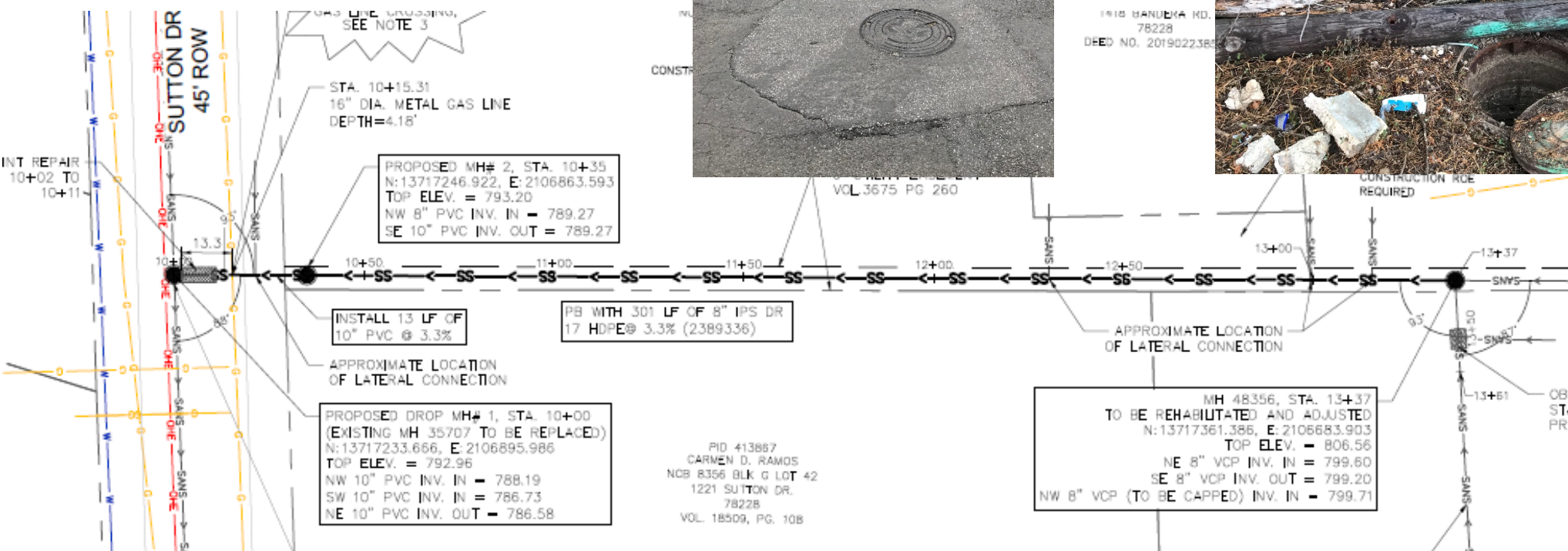
Project Details:

Site C26: Boring



Project Details:

Site C40: PB



Project Summary of Construction Activities:

- PB/CIPP/OC/Boring Installation
- Construction ROE Coordination
- Bypass Pumping
- Traffic Control
- Service Laterals
- Manhole rehabilitation
- New Manhole Installs
- Manhole adjustments
- Televising Inspection
- Questions/Comments

QUESTIONS



Reminder: Oral statements or discussion during the pre-bid meeting today will not be binding, nor will it change or affect the terms or conditions within the Plans and Specifications of this Project. Changes, if any, will be addressed in writing only via an Addendum.